

## Valentine's Scramble

See photos from last month's social event

p3

## St. Patrick's Day Event

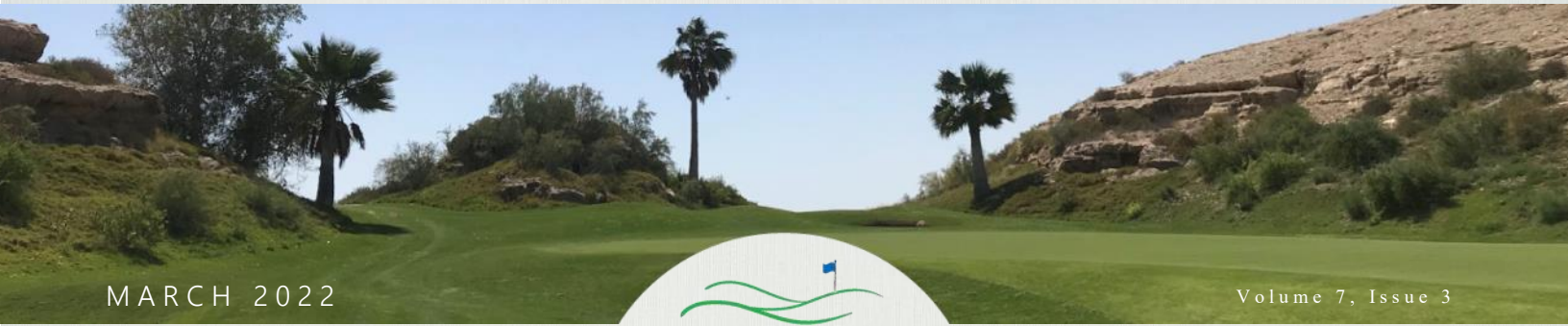
Don't miss out on the next fun social event! Glow-in-the-dark golf balls will be provided!

p6

## 2022 CEO Cup results

Top finishers and photos from the CEO Cup Dinner

p8 & 9



MARCH 2022

Volume 7, Issue 3

ROLLING HILLS GOLF COURSE



DHAHRAN, SAUDI ARABIA

## PRESIDENT'S MESSAGE

February has always been a great month to golf at Rolling Hills as the weather is usually perfect – this February is no different. I hope you're taking advantage of it and getting out on the course.

I want to thank everyone that helped organize the **2022 CEO Cup**. Tim Billa did a fantastic job as CEO Cup Chairman and overseeing the entire event. Christo Steenkamp and Tracey Jackson took care of all the event day action to ensure the tournament ran as smoothly as possible. RHGC's new Media Director did a fantastic job of organizing photographers for the weekend and creating all the media for the CEO Cup's Awards Dinner.

I also want to thank **all the volunteers** who came forward to help. Without volunteers like these, the Club cannot run. It was great to be back at the Plaza Conference Center this year and have our CEO at the dinner.

If you have never attended the CEO Cup dinner, I highly suggest you

attend next year. It truly is an outstanding night.

RHGC also had its first social event of the year, Saint Valentine's Night Golf. Steve Farley did a great job organizing it in his first event as Social Director. Steve is already planning the next social event – **St. Patrick's Day Night Golf**. See page 6 for more details on this fun event.

**RHGC needs your help** in maintaining the great shape the course is in. It has been noticeable that some members have not been raking bunkers, repairing pitch marks, and filling divots. RHGC is starting a **three R campaign** to help this: **R**ake bunkers, **R**efill divots, and **R**epair ball marks.

You might not be aware that the RHGC has a Code of Conduct for its members. Members who do not rake, refill, and repair are in violation of the Code of Conduct and this could possibly lead to a suspension of membership. Another

violation of the Code of Conduct is not using the mats at the driving range and hitting off the grass.

I have noticed big divots on the driving range. These divots have a hard time growing back in the winter – thus the reason for the mats.

This weekend is the **Ryder Cup**; another popular tournament for RHGC. This year's Captains are Les Hertlein for Team USA and Tom Harneshaug for Team ROW. They have been busy fine-tuning the matches in preparation for this great event. We'll soon see who did the better job.

See you on the course,  
Bruce Waldner



**Did you know: a pitch mark left unrepaired for 10 minutes or longer takes 15 days to recover. Whereas a pitch mark repaired within 5 minutes recovers completely within 24 hours.**





The 2022 Ryder Cup is taking place March 4 & 5.

It's not too late to **volunteer!**

Email [Tjackson1178@yahoo.com](mailto:Tjackson1178@yahoo.com) to see how you can help.



March  
Monthly  
Medal

March 26, 2022

Register now at  
[golfgenius.com](http://golfgenius.com)



## DID YOU KNOW?

The average number of ball marks made on greens per rounds is **8 per golfer**. In January, there were over 2500 rounds played at RHGC, which means approximately **20,000 impressions** were made on our course that month. Without each golfer refilling their divots and repairing their ball marks, our course would quickly become unplayable.

**Please do your part and follow proper course care etiquette.** Remember the 3 Rs: Refill your divots, Repair your ball marks, and Rake your bunkers.

## FROM THE PRO *Stuart Hurstfield, P.G.A. Member*

### LADIES ROLL UP CLASS

Every **Thursday morning**, ladies are invited to join Thursday morning group sessions from 9-10 am for beginner and intermediate golfers. All equipment is supplied and instruction covers all the skills to get one out on the course! The cost is 90 SAR per person, per class and sign-up is at the ProShop.

### GOLF IN A WEEK

The next Golf in a Week class starts on **March 27**. Classes are from 6-7 pm and run for five consecutive days. These group sessions are ideal for beginner and intermediate golfers and covers all aspects of the game: safety, rules, etiquette, and swing technique. All equipment and range balls are supplied. The cost is 600 SAR. Sign up at the ProShop.

### JUNIOR TOUR SCHOOL

The Junior Tour School will start on **March 5** and run each Saturday for four consecutive weeks. The classes are from 8-9 am and will cover rules, etiquette, and golf swing mechanics in a group setting. All equipment and range balls are supplied. The cost is 300 SAR. To register, please visit the ProShop.

### INDIVIDUAL LESSONS

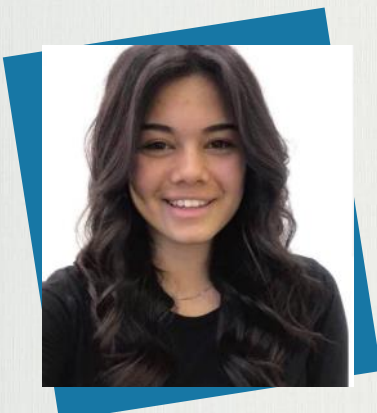
Individual lessons incorporating GASP video analysis can be taken at times convenient to suit your schedule. Junior pricing is 30 minutes/150 SAR and Adults is 50 minutes/200 SAR. Register at [stuarthurstfield@gmail.com](mailto:stuarthurstfield@gmail.com) or WhatsApp +44 775 337 1547.

*Golf club repairs and re-gripping service available. Contact Stuart for details.*



# Valentine's Couples Scramble

FEBRUARY 17, 2022



## RHGC Intern

RHGC has an intern! Nicole Waldner Thoen is pursuing her Bachelor's of Commerce degree in Event Management at George Brown University in Toronto. Nicole will be helping out to plan events, posting announcements on the Club's website, and traveling to Jeddah to help out with the LET tournament in March. If you see her around, be sure to say hi.

# Handicap Corner

## Course Rating System

The World Handicap System (WHS) is jointly governed worldwide by the USGA and The R&A and encompasses both the Rules of Handicapping and the Course Rating System™. The WHS provides golfers with a consistent and portable measure of their playing ability. This is made possible, in part, through the Course Rating System, which is designed to ensure that ratings of courses are in proper relation to the ratings of other courses. If this is not achieved, players at courses rated too low will be over-handicapped, and vice versa. By including a unified system for Course Rating under the WHS, a player can use their Handicap Index at any course, in any country, and have a fair and equal game with anyone, from whichever tees they most enjoy.

## Course Rating Process

When a golf course is rated, playing length and ten obstacle factors are evaluated by the rating committee which allows the unique challenges of each golf course to be quantified. The team measures the distance to each obstacle, as well as the effect it has on scratch and bogey golfers.

Element	Method
<b>Playing Length</b>	
Length (Tee to Front of Green)	Yardage check using lasers and wheel
Length (Center of Green to Next Tee Marker)	Yardage check using Lasers
<b>Obstacle Factors From Tee to Green and all Between</b>	
Topography	Evaluation of the impact of terrain on play. Mounds have up to four playable sides that impact stance or lie. Mounds in fairway are rated under Topography. When considering mounds, rating team must evaluate downhill, sidehill, and uphill lies on the various sides of the mounds, rough height, and how the mounds will impact scoring. Hollows are essentially inverted mounds and should be rated using same procedure.
Fairway Widths	Evaluation of the difficulty of keeping the ball on the fairway. Measuring fairway width in all landing zones (which is the fairway-wide area extending from where the shot hits the ground to where it comes to rest.
Green Target Size	To determine the effective diameter of a circular or oval green, average width and depth
Recovery & Rough	Values based on Green Target Rating and general height of the rough grass on the hole. Mounds in the rough or around the green are rated under Recoverability and Rough (R&R). Extreme rough is rated under OB/Extreme Rough and may possibly be rated under Recoverability and Rough
Bunkers	Fraction of green closely bordered by bunkers and their depth
Crossing Obstacles	Yardages to cross penalty areas or Out of Bounds / Extreme Rough. Note: Extreme Rough includes underbrush in trees, or other conditions such as sand dunes (not bunkers), palmettos, tree roots, rocks, desert, etc., which make it likely the ball will be lost or advanced only with great difficulty.
Lateral Obstacles	Shot distance to target lateral penalty areas or Out of Bounds(OB)
Trees	Assessment of the impact of trees on hole and the recovery level
Green Surface	Speed of green (stimpmeter) taking into account contours
Psychological	Psychological is an evaluation of the cumulative effects of other obstacles on a player's score

*[continued on next page]*



## Handicap Corner [continued]

There are also effective length corrections made where necessary

Roll	Adjustment for Roll is evaluated in tee shots on par 3, tee shots and additional full shots on a Par 5 and a bogey golfer on a par 3 when the player cannot reach the green in one shot. Assessing whether the roll is downhill or uphill and whether the roll is Significant, Moderate, Minor Slope or Level
Elevation	Altimeter Readings
Dog Leg / Layups	Is the hole a dog leg, does the player need to layup?

Scorecard yardage is not acceptable as a sole source of measurement and must be verified. An independent “recognized” measurement certificate should be provided PRIOR to a Rating commencing.

### Obstacle Ratings

All obstacles are given a numerical value ranging from 0 (non-existent) to 10 (extremely significant), depending on its relation to how a scratch or bogey golfer would play the hole.

OBSTACLE RATING SUMMARY TABLE	
Rating	Evaluation
0	Obstacle does not exist.
1	Obstacle exists but is generally out of play.
2	Obstacle is much less significant than average.
3	Obstacle is less significant than average.
4	Obstacle is of average significance.
5	Obstacle is more significant than average.
6	Obstacle is much more significant than average.
7 to 10	Obstacle is of extreme significance.

### Course Rating and Slope

Following this thorough evaluation by the qualified rating team, a Course Rating and Slope Rating is issued for each set of tees.

The numbers for each hole's obstacles are totalled and multiplied by a relative weighting factor. The weighted obstacle stroke values are applied to scratch and bogey formulas and then converted to strokes. Those strokes are added or subtracted from the Yardage

Rating to produce a Bogey Rating and USGA Course Rating, and the difference between those two values multiplied by a constant factor is the Slope Rating. Since Course Rating teams are trained by Authorized Associations, each course’s rating is carried out with consistency and accuracy, which is vital to the integrity of the WHS.

Courses must be re-rated at least every 10 years, or if it is a new golf course, within 5 years. A course must also be re-rated if significant changes have been made to the course.

### Course Rating and Slope Database

You can search any course here <https://ncrdb.usga.org/>.

If you have any questions please contact Stephen Vezendy, Handicap Director at [rhgchandicaps@gmail.com](mailto:rhgchandicaps@gmail.com)



#### COVID SAFETY REMINDERS

- Show your Tawakkalna App to the starter
- Check your temperature each time you arrive at the course
- Wear a face mask while inside the Pro Shop and Clubhouse



# Rolling Hills Golf Club St. Patrick's Night Golf

Experience RHGC at night with a Texas Scramble, glow-in-the-dark golf balls, Dinner and Prizes on March 24th!

Golf check-in starts at 5:30 pm  
Shotgun start at 6:15 pm  
Dinner at 8:15 pm

Sign-up starts on February 22nd. Create a group of four and sign up on **Golf Genius**. Then head to the ProShop to pay your fee. Team fees are 600 riyals/team. You'll be playing with your friends, so just collect the money from them and turn in one team payment.

( There are a limited number of teams and those spots will go quickly )

You don't have to golf well to win, but we'll have prizes for those folks too! Dress up Like a Leprechaun (or at least wear green) and decorate your cart!

There will be prizes for 1st and 2nd place winners (Front & Back), Best Dressed, and Best Cart!

Additional dinner tickets can be purchased at the Clubhouse for 150 riyals/person. All team fees and guest dinner tickets must be purchased by March 20th at 6:00 pm. All teams who have not paid their fees by March 20th will be replaced with teams on the waiting list.

On March 24th, wear green, decorate your cart, and check-in at the Back Patio at 5:30 pm.

May the luck of the Irish be with you!





# TUESDAY MORNING LADIES LEAGUE (TMLL)



The TMLL group had a great month of February. The morning group had a tournament and lunch at Eatsy. We also had an evening event which was wonderful as some of the ladies who work joined us. Hope to see even more ladies the first few weeks of March.

Happy Spring Break!  
Angela Farley  
Director TMLL



## March TMLL Schedule



Open  
Play



Fun  
Tournament



Monthly  
Medal



Spring  
Break

**DON'T FORGET  
the THREE **Rs**  
of golf etiquette**



**RAKE  
bunkers**



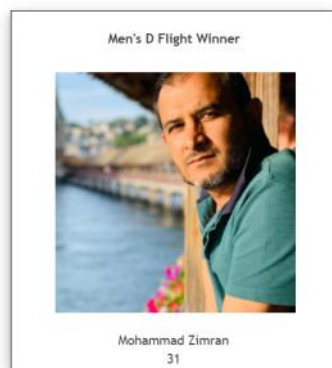
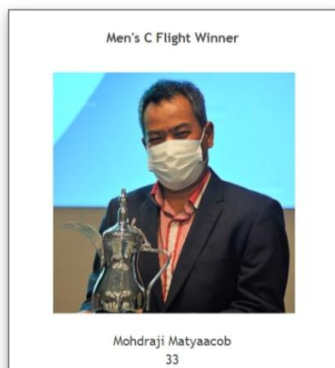
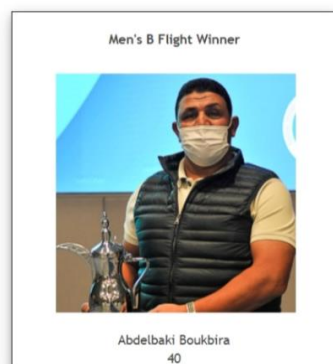
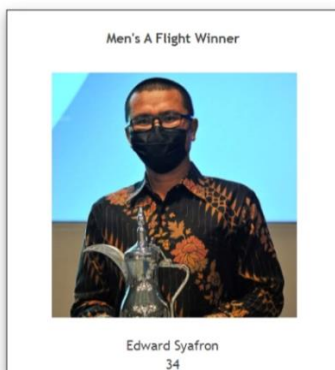
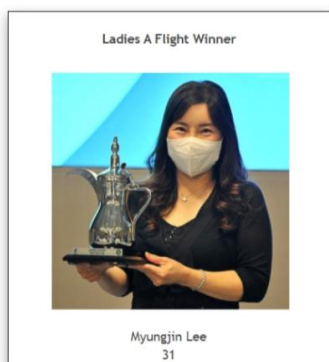
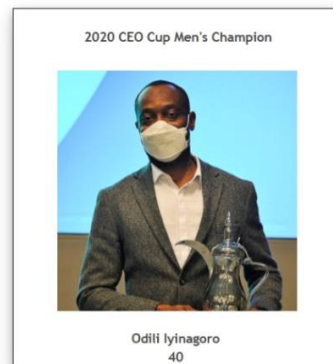
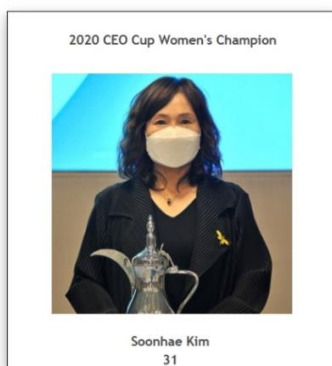
**REFILL  
divots**



**REPAIR  
ball marks**



The 2022 CEO Cup Committee and SAGA wish to thank all who participated in this year's CEO Cup and, for the many volunteers who assisted in the various capacity of registration, marshalling and reception. Congratulations to all of the winners.



### Club Winners

Club	Name	Total
Ain Nakhl Golf Club	Derrick Smith	30
Rolling Hills Golf Club	Ismail Musa	32
Surfside Golf Club Division	Dan Bachman	30
Wadi Al Saeed Golf Club	Manuel Garcia	38

### Closest to the Pin

Hole	Winner	Distance
4	Kamal Ariffin	5' 11"
8	Ed Devlin	0' 11"
11	Hakseon Kim	8' 11"
14	Soonhae Kim	25' 8"

See full results [here](#)



# 2022 CEO CUP Dinner Highlights



View the CEO Cup Photo Gallery here: [2022 CEO Cup | RHGC \(arabiangolf.net\)](https://arabiangolf.net/2022-CEO-Cup)



## FEBRUARY MONTHLY MEDAL RESULTS



### Flighted Winners

#### A Flight

Place	Flight	Name	Front	Back	Total
1	A	Padilla, Chris	34	38	72
2	A	Devlin, Edward	38	37	75
3	A	Thompson, Troy	37	39	76

#### B Flight

Place	Flight	Name	Front	Back	Total
1	B	Ahn, YoungKyoung	32	37	69
2	B	Kim, Soonhae	36	36	72
3	B	Lee, Jae	34	38	72

#### C Flight

Place	Flight	Name	Front	Back	Total
1	C	Meisner, Jeff	34	39	73
2	C	Battle, Dwight	33	41	74
3	C	Sinesi, John	39	36	75

#### D Flight

Place	Flight	Name	Front	Back	Total
1	D	Pandiangan, Juni	34	35	69
2	D	Kim, Hyun Kil	35	35	70
3	D	Lu, Feng	37	34	71

#### E Flight

Place	Flight	Name	Front	Back	Total
1	E	Evans, Simon	34	36	70
2	E	Aritonang, Ida	34	37	71
3	E	Siddiqui, Usama	37	36	73

### Closest to the Pin

Hole	Winner	Distance
4	Chun, Soyoun	8' 10"
8	Kim, Sammy	12' 0"
11	Armstrong, Adam	5' 8"
14	Quaye, William	15' 4"

See full results [here](#)

## 2021 RHGC Match Play Winners

### Flighted Match Play Winners



**A Flight**  
**Derrick Smith**



**B Flight**  
**Steve Farley**



**C Flight**  
**Abdelbaki Boukbira**

### Single Match Play Winner



**Edward Syafron**

### Team Match Play Winner



**Derrick Smith & Lee Kirk**

All 2021 RHGC Match Play Champions have been awarded RHGC Pro Shop credit in the amount of 400 SR – **Congratulations!**

## 2021 Most Improved Player



**Wayne Greenhalgh**

Per the RHGC Tournament Policy, each RHGC member is eligible to win the Most Improved Player of the Year Award. This is based on your December 1st official index handicap compared against player's November 30th official index handicap. A player must be registered for the entire calendar year to qualify for this award.